



Quality and Integrity Building Form and Function

Winter 2016

WEB Pages



Above: The new dining room space will easily accommodate the addition of the new sixth grader class. Inset: An exterior view of the expanded cafeteria and entrance.

Dakota Meadows Middle School Expansion

According to Greater Mankato Growth, enrollment in the Mankato area public schools is on the rise. Since 2007, enrollment is up by 530 students, and by 2017 an additional 757 students are expected to enroll.

So, when the ISD77 wanted to integrate Garfield's sixth grade classrooms with the new Dakota Meadows Middle School wing—in an effort to align the sixth through eighth grade structure district-wide—an expansion would be necessary.

Part of the Dakota Meadows project included the expansion of the cafeteria and food service area. Adding an entire sixth grade to this facility posed a need to increase this space. The main challenge was that there would only be 12 weeks to complete the work. Work could not begin until school let out for summer break, yet the facility would need to be fully operational upon return of the students for the new school year.

The project's scope included removal of existing exterior bearing walls for expansion of the dining area. Interior walls were

removed to modify the layout of the kitchen, dishwashing and serving areas to accommodate the additional students. Unique design elements including soffits, tile accents and multiple terrazzo colors added to the complexity of the schedule. Trades worked closely with each other to maintain the aggressive schedule.

The kitchen project included many new pieces of serving equipment and tables. Custom fabrication was done off-site and included the repurposing of many existing pieces to reduce costs. New equipment was installed in just six days, allowing the electrical and mechanical trades ample time to make final connections. The entire project included 30,000 square feet of new construction and 12,000 square feet of renovation.

The project has helped students better align with district standards and available curricular programs, and helps to reduce transition for students by providing continuity at Dakota Meadows for three years.



Web Construction wishes you a safe and prosperous 2016!

DESIGN/BUILD | GENERAL CONTRACTING | DEVELOPMENT | BUILD-LEASE | RESTORATION

300 St. Andrews Drive | Suite 200 | Mankato, MN 56001 | TEL 507.387.1667 | FAX 507.388.1600

Visit us online at www.webconmankato.com

Have A Nice Flight

Flying may be the fastest and safest way to travel, but we all have our own preferences and quirks when traveling by air. A survey of more than 1,100 family travelers by *ExpertFlyer* looked at passenger habits. Their findings included:

- **Airline choice.** United? American? Southwest? Forty-five percent of participants said that airline mile redemption was a factor in choosing which airline to fly.
- **Storage.** Space is at a premium on most airplanes. Seventy-five percent admitted to “stealing” overhead bin space beyond their authorized allotment.
- **Food.** In-flight meals aren't the only option if you're hungry. More than one-third of passengers said they bring their own food to eat during a flight.
- **Complaints.** Flying can be stressful. The top complaint: A bad seat or a seat not near companions (35%), followed by delays (25%), and general discomfort (24%).
- **Worries.** Lost luggage is one thing, but 21% of survey participants said that terrorism is their biggest concern when traveling with their families. That was followed by getting lost or separated (19%) and crime (19%).



How To Build On The Creativity Of Others

Thomas Edison once said, “Make it a habit to keep on the lookout for novel and interesting ideas that others have used successfully. Your idea needs to be original only in its adaptation to the problem you are working on.”

What creative thinkers know is how to adapt. Follow these four steps to train your own creative mind to adapt ideas into new solutions:

1. **Look at your problem.** Compare it against other similar problems in your organization or industry.
2. **Look into the past.** Find parallels to your current situation. What solutions were successfully used that could also be applied in your instance?
3. **Identify people you can emulate.** Observe how they approach challenges and problems.
4. **Expand your scope.** Look at ideas outside your field. Can you find any to incorporate?

How Much Is That In Galleons?

Converting money when traveling to another country is difficult enough. What happens when you travel to a different planet? Many famous fictional worlds have their own currencies, designed by writers and filmmakers. Take a look at what your cash would buy (as calculated by Mobile Money UK) in places you've only read about or seen on the big screen:

- **Star Wars.** Currency: Galactic Credit Standard. Conversion: 10 GDS = \$10.10
- **Flintstones.** Currency: Clams. Conversion: 10 clams = \$32.00
- **Harry Potter.** Currency: Galleons. Conversion: 10 galleons = \$73.50
- **Game of Thrones.** Currency: Gold dragons. Conversion: 10 Dragons = \$13,157.89
- **Discworld.** Currency: Ankh-Morpork Dollar. Conversion: 10 AMD = \$1,666.67
- **Dune.** Currency: Solari. Conversion: 10 Solari = \$16.39

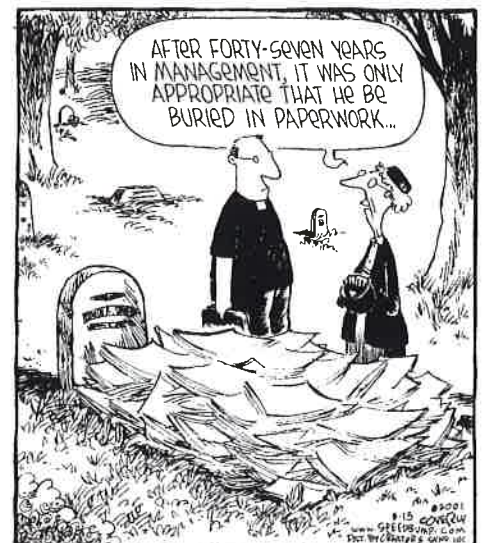
Social Media: Mistakes That Can Harm You

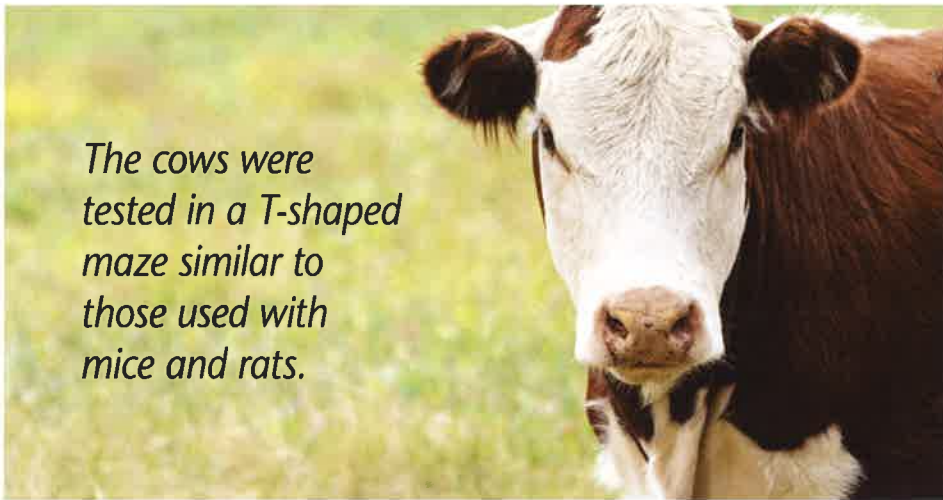
Whether you're looking for a job or just trying to keep the one you have, beware of these social media errors:

- **Complaining.** Think twice before griping about how boring your job is or how much you hate your boss. Negative comments can easily come back to haunt you. Remember that everything you post online is public.
- **Careless comments.** Avoid posting jokes or sarcastic comments. What seems funny in the moment can strike a nerve or prompt a backlash. Keep your tone professional and polite.
- **Exaggeration.** This is especially dangerous for jobseekers, but it can trip up experienced veterans as well. Don't cite qualifications or degrees you don't actually have. Pretending you graduated from a particular university when you only took a few classes there can land you in hot water.
- **Failure to network.** Facebook, LinkedIn, and other social media sites offer opportunities to make connections that will support your career. Reach out to people who can help you—and whom you can help in return.
- **Not managing your online image.** Use the highest privacy settings on all your social media sites. Periodically search for your own name on Google and Bing. Review your own posts and remove anything that might send the wrong message.

SPEED BUMP

Dave Coverly





The cows were tested in a T-shaped maze similar to those used with mice and rats.

Moo! Cows May Be Smarter Than You Think

What's the smartest animal you can think of? Dolphins and chimpanzees may spring to mind quickly, but don't neglect one often-overlooked farm animal: the cow.

College students at the University of Sydney (as reported by *The Huffington Post*) conducted experiments with dairy cows and found that our bovine friends are capable of quickly mastering a maze to find food, and thus may possess better problem-solving skills than previously known.

The cows were tested in a T-shaped maze similar to those used with mice and rats. They learned to follow a sound through the maze to get to their food, with one of them reaching its goals within the first 20 seconds of the test.

The results suggest that cattle farmers could train cows to obey specific sound signals to come in for milking, producing greater efficiency on dairy farms.

Don't Listen To The Critics

If you worry that your work is unappreciated, consider that even notable critics make mistakes. From *Rotten Reviews: A Literary Companion*, edited by Bill Henderson (Penguin Books) come these examples of reviewers who missed the mark when evaluating various "failures":

- **Emily Dickinson.** In describing poet Emily Dickinson for an 1892 review in *The Atlantic Monthly*, Thomas Bailey Aldrich noted his belief that "an eccentric, half-educated recluse in an out-of-the-way New England village—or anywhere else—cannot with impunity set at defiance the laws of gravitation and grammar."
- **William Faulkner.** *The New Yorker's* Clifton Fadiman didn't mince words in his 1936 review of William Faulkner's *Absalom, Absalom!* Fadiman declared it "the final blowup of what was once a remarkable, if minor, talent."
- **Rudyard Kipling.** A *San Francisco Examiner* editor summed up the paper's view of *Jungle Book* author Rudyard Kipling in an 1889 rejection letter that read: "I'm sorry, Mr. Kipling, but you just don't know how to use the English language."
- **Charles Dickens.** And in 1859, the *Saturday Review* made this bold prediction of Charles Dickens, author of *Great Expectations*, *A Tale of Two Cities*, and *Oliver Twist*: "We do not believe in the permanence of his reputation."

"Gratitude can transform common days into thanksgivings, turn routine jobs into joy, and change ordinary opportunities into blessings."

—William Arthur Ward



Which single recorded by Jan and Dean was the first "surf" song to top the U.S. Billboard pop chart?

Trivial Matters

1) Advertising executive Gary Dahl was responsible for which of the following short-lived fad items?

- a) Mood Rings
- b) Pet Rocks
- c) "Baby On Board" Signs
- d) Troll Dolls

2) "Conrad" was the first name of the founder of which hotel chain that still bears his surname?

- a) Sheraton
- b) Radisson
- c) Marriott
- d) Hilton

3) Which of the following singles was recorded by Jan and Dean and was the first "surf" song to top the U.S. Billboard pop chart?

- a) Surfin' U.S.A.
- b) Surfin' Safari
- c) Surf City
- d) Surfer Girl

4) The late Stanley Ann Dunham is the mother of which U.S. President?

- a) Barack Obama
- b) Bill Clinton
- c) Jimmy Carter
- d) Lyndon Johnson

5) By what name was Shelly Duvall's character, Winifred Torrance, known in the 1980 thriller *The Shining*?

- a) Winnie
- b) Willa
- c) Wendy
- d) Wanda

—from *mental_floss*

Answers: 1) b; 2) d; 3) c; 4) a; 5) c



...and projects recently completed

- **St. Peter Substation**, renovation, St. Peter, Minn.
- **Big Gain**, warehouse expansion, Mankato, Minn.
- **CCF Bank**, Mankato, Minn.
- **Madison East Center** – Mayo entrance, Mankato, Minn.
- **Unitarian Universalist Church**, Mankato, Minn.
- **St. Paul's Lutheran Church**, chair lift, Truman, Minn.
- **Wis-Pak**, blowmold machine, North Mankato, Minn.
- **Cambria**, Line 5 concrete, LeSueur, Minn.

As A Reminder...

We ask you to keep us in mind when planning your next potential project. Because we are able to self-perform many tasks, we can ease your burden and push to get your job completed on-time, on-budget.

- Design/Build
- Construction Management
- General Contracting
- Development Assistance
- Build to Suit
- Facility Assessments
- Remodeling and Restoration
- Feasibility Studies
- Maintenance and Repairs
- Building Diagnostics



300 St. Andrews Drive
Suite 200
Mankato, MN 56001



Dakota Meadows Middle School Expansion

Adding an entire sixth grade to this facility posed a need to increase this space. The main challenge was that there would only be 12 weeks to complete the work. Pictured above, left: A new servery and kitchen space. Right: The new dishwashing room. See story on page 1.



We're doing our part. This newsletter is printed on environmentally-friendly paper—50% recycled, using 25% post-consumer waste